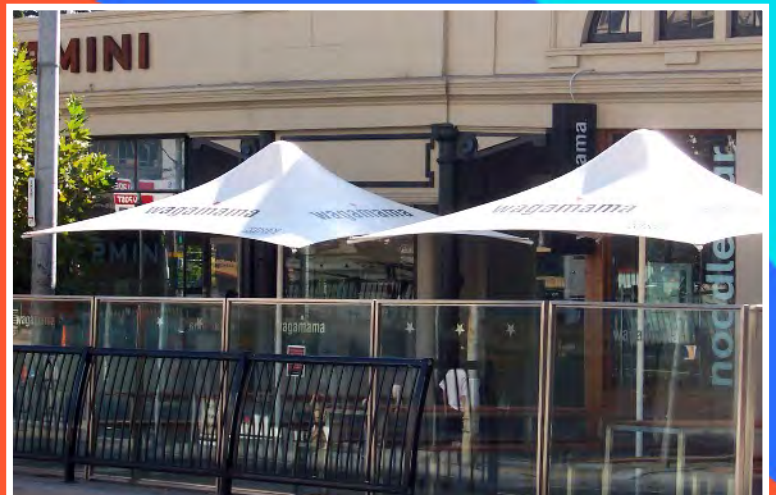


PVC FABRICS - Models: Storm C & S

To achieve a modern and high-end look to your projects, specify PVC fabric for your parasol canopy. A full range of 40 colours, including the special satin finish colours designed to perfectly compliment current architectural trends. Canopies in PVC provide protection against sunlight and inclement weather conditions all year round. All colours give 50% or more UV protection (100% for the satin colours). Exceptional dimensional stability and long term mechanical strength make these materials ideal even in the most demanding environments. The smooth surface of the PVC shrugs off dirt and ensures easy upkeep of your parasol.



- Choice of 40 colours
- Proven longevity
- 'Stay-clean' surface

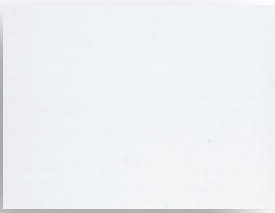
Morton Commercial Parasols

Unit 1, Horseferry Bridge, Cirencester Road, Witcombe, Gloucester, GL3 4SU, United Kingdom
T: +44 (0)1452 865260 E: info@mortonparasols.com W: www.mortonparasols.com

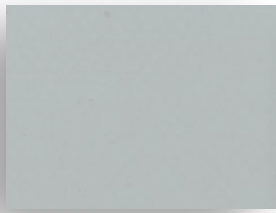


4 satin colours

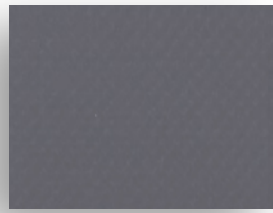
Note: Satin colours provide 100% UV protection



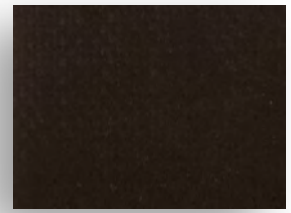
White
502V2-SA8102C



Boulder
502V2-SA2171C

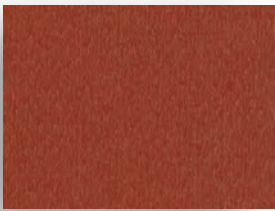


Concrete
502V2-SA2167C

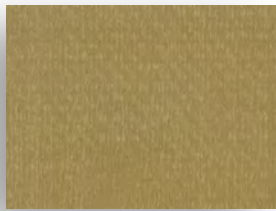


Black
502V2-SA8450C

3 metallic colours



Velvet Red
502V2-SA2152C

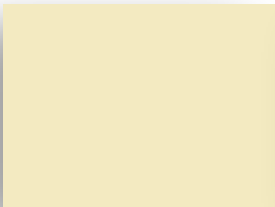


Autumn
502V2-SA2138C

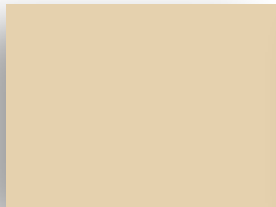


Aluminium
502V2-SA2168C

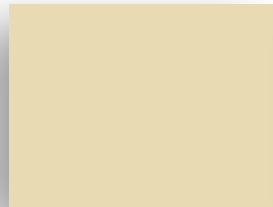
33 gloss colours



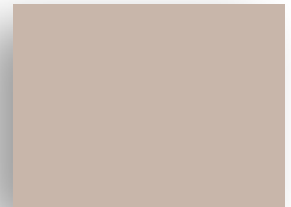
Champagne
502V2-SA8341C



Vanilla
502V2-SA8861C



Hemp
502V2-SA50265C



Sandy Beige
502V2-SA2135C



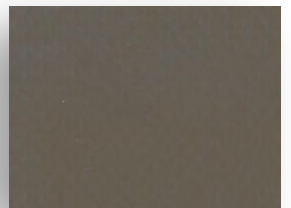
Pepper
502V2-SA2012C



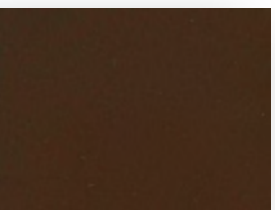
Camel
502V2-SA2141C



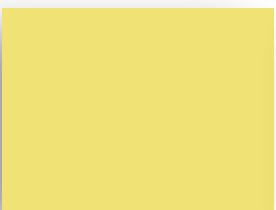
Cocoa
502V2-SA2148C



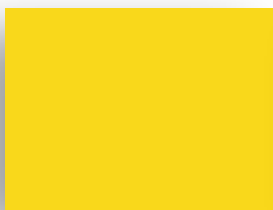
Teak
502V2-SA50669C



Walnut Stain
502V2-SA2137C



Lemon
502V2-SA50674C



Buttercup
502V2-SA2166C

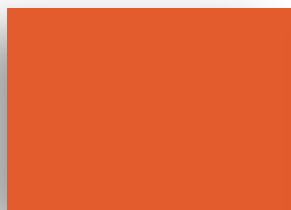


Dijon
502V2-SA50671C

33 gloss colours



Orange
502V2-SA8204C



Carrot
502V2-SA2172C



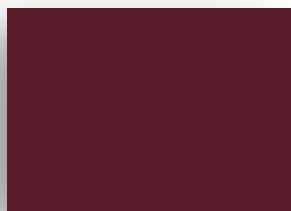
Raspberry
502V2-SA2150C



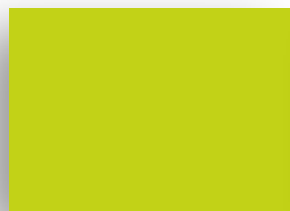
Poppy
502V2-SA8255C



Terracotta
502V2-SA20185C



Burgundy
502V2-SA8284C



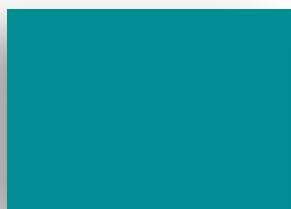
Aniseed
502V2-SA2157C



Olive
502V2-SA50668C



Moss Green
502V2-SA2158C



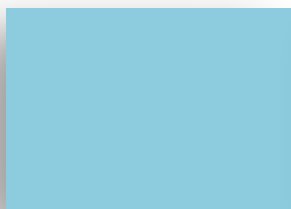
Porcelain Green
502V2-SA50670C



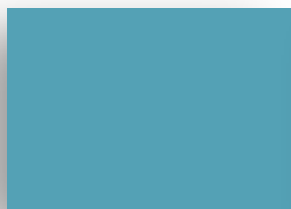
Tennis Green
502V2-SA8056C



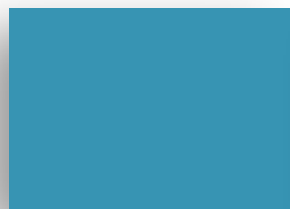
Spruce
502V2-SA2156C



Celadon
502V2-SA50675C



Steel Blue
502V2-SA50676C



Lagoon
502V2-SA2160C



Dark Blue
502V2-SA50673C



Thistle Blue
502V2-SA50270C



Celestial Blue
502V2-SA50672C



Victoria Blue
502V2-SA50677C



Midnight Blue
502V2-SA2161C



Marine
502V2-SA1125C

Note: The colours and textures represented in this document are provided as a reference only.

Colour considerations

For bright, sunny locations, many of our clients prefer dark colours which offer some respite from the sunshine and reduce glare. They also provide slightly higher levels of UV protection.

For use in more shaded locations we make a higher proportion of light coloured canopies. This is so the available light can shine through and generally brighten the area.

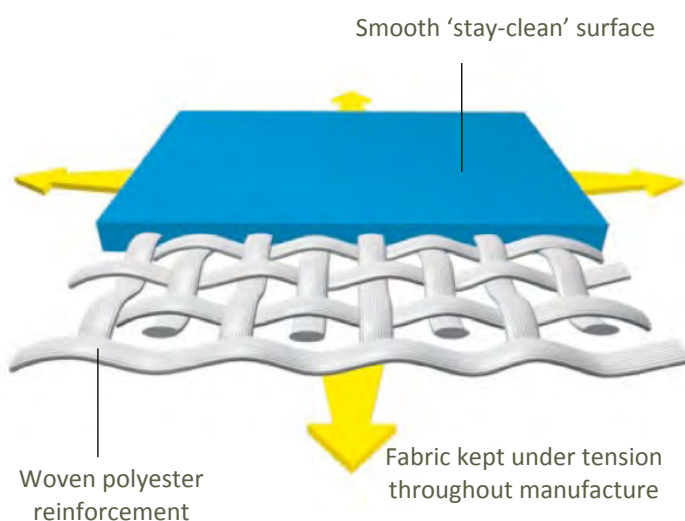
Sun and rain protection

PVC fabrics are effective sunscreens since they filter a high percentage of ultraviolet radiation. The level of protection varies from one fabric to another depending on its weight, thickness and colour. See next page for full information about solar protection that is obtainable from each of the fabric types and colour.

The smooth welded seams of a PVC canopy ensures that the parasol is also totally waterproof and will provide shelter from the rain as well as from the sun. A perfect parasol/ umbrella combination.

Reinforced PVC

The diagram below shows the composition of superior PVC fabrics used. A woven polyester reinforcement, kept under tension throughout the manufacturing process, provides the dimensional stability that will prevent canopy deformation or sagging, in addition to making the fabric resistant to damage. The thickness of the PVC coating is greater on the upper surface to give longer life, and the 'stay-clean' smooth finish of the fabric helps to keep the canopy looking 'as new' and requiring minimum maintenance.



Branding

The super-smooth surface of PVC fabrics makes them ideal for receiving printed designs. Expect excellent adhesion with computer-cut vinyl graphics, and pin-sharp definition when using screen printing techniques.

Care and cleaning

Proper care and cleaning will prolong the life of your canopy. Periodically remove any deposits from the fabric using a soft brush. Spray the canopy with warm water, and apply a gentle (natural) soap if required. Rinse thoroughly and air-dry. Do not use detergents or solvents as these could damage the fabric.

Morton Commercial Parasols

Unit 1, Horseferry Bridge, Cirencester Road, Witcombe, Gloucester, GL3 4SU, United Kingdom
T: +44 (0)1452 865260 E: info@mortonparasols.com W: www.mortonparasols.com

Solar Protection

Satin Finish

	Solar Transmission	Solar Reflection	Solar Absorption
Black 502V2-SA8450C	0	16	84
Boulder 502V2-SA2171C	2	51	47
Concrete 502V2-SA2167C	1	27	72
White 502V2-SA8102C	11	80	9

Metallics

	Solar Transmission	Solar Reflection	Solar Absorption
Aluminium 502V2-SA2168C	1	46	53
Autumn 502V2-SA2138C	2	34	64
Velvet Red 502V2-SA2152C	7	38	55

High Gloss

	Solar Transmission	Solar Reflection	Solar Absorption
Aniseed 502V2-SA2157C	10	53	37
Burgundy 502V2-SA8284C	1	18	81
Buttercup 502V2-SA2166C	15	58	27
Camel 502V2-SA2141C	6	49	45
Carrot 502V2-SA2172C	14	49	37
Celadon 502V2-SA50675C	8	59	33
Celestial Blue 502V2-SA50672C	2	25	73
Champagne 502V2-SA8341C	11	72	17
Cocoa 502V2-SA2148C	1	25	74
Dark Blue 502V2-SA50673C	1	18	81
Dijon 502V2-SA50671C	4	42	54
Hemp 502V2-SA50265C	1	47	52
Lagoon 502V2-SA2160C	5	35	60
Lemon 502V2-SA50674C	10	59	31
Marine 502V2-SA1125C	6	17	77
Midnight Blue 502V2-SA2161C	6	28	66
Moss Green 502V2-SA2158C	2	36	62
Olive 502V2-SA50668C	1	21	78
Orange 502V2-SA8204C	16	47	37
Pepper 502V2-SA2012C	1	38	61
Poppy 502V2-SA8255C	18	37	45
Porcelain 502V2-SA50670C	1	22	77
Raspberry 502V2-SA2150C	12	45	43
Sandy Beige 502V2-SA2135C	5	61	34
Spruce 502V2-SA2156C	1	15	84
Steel Blue 502V2-SA50676C	8	47	45
Teak 502V2-SA50669C	0	11	89
Tennis Green 502V2-SA8056C	1	18	81
Terracotta 502V2-SA20185C	2	28	70
Thistle Blue 502V2-SA50270C	0	16	84
Vanilla 502V2-SA8861C	4	65	31
Victoria Blue 502V2-SA50677C	7	34	59
Walnut Stain 502V2-SA2137C	0	18	82

Solar transmission + reflection + absorption = 100% incident energy

Morton Commercial Parasols

Unit 1, Horseferry Bridge, Cirencester Road, Witcombe, Gloucester, GL3 4SU, United Kingdom
T: +44 (0)1452 865260 E: info@mortonparasols.com W: www.mortonparasols.com

Satin Finish Technical Properties

Weight	570g/m ² • 16.8oz/sq yd	EN ISO 2286-2
Width	180 cm • 70.9"	
Length	40m • 43.74yds	
Tensile strength warp/weft	200/200 daN/5 cm	EN ISO 1421
Tear strength warp/weft	20/20 daN	DIN 53.363
Adhesion	7/7 daN/5 cm	EN ISO 2411
Surface treatment	PVDF varnish both sides	
Flame retardancy rating	M2/NFP 92-507 • M2/UNE 23727 • Method 1 and 2/NFPA701 • C5FMT19 • CLASSA/ASTME84 • BS 7837 • B1/DIN 4102-1 • CLASSE2/UNI 9177 • CAN/ULC-5109 • SchwerbrennbarQ1-Tr1/ONORMA3800-1 • 1530.2/AS/NZS G1/GOST 302944-94 • B-s ₂ ,d ₀ /EN 13501-1	
Flame retardancy Euroclass		B-s ₂ ,d ₀ / EN 13501-1
Management system quality		ISO 9001

The above technical data represents average values subject to a +/-5% tolerance.

The buyer of our products is fully responsible for their application and their transformation with regard to any possible third party. The buyer of our products is responsible for their implementation and installation according to the standards, workmanship and safety regulations in force in destination countries. For information on our contractual warranty, please refer to the relevant terms and conditions.

The values quoted above represent results of tests performed in compliance with common design practices and are provided for information only to enable customers to make the best use of our products. Our products are subject to changes based on technical advances and we reserve the right to modify their characteristics at any time. The buyer of our products is responsible for checking the validity of the above data.

Morton Commercial Parasols

Unit 1, Horseferry Bridge, Cirencester Road, Witcombe, Gloucester, GL3 4SU, United Kingdom
T: +44 (0)1452 865260 E: info@mortonparasols.com W: www.mortonparasols.com

Example PVC canopies



Storm 'S' 4m square in Aniseed and Raspberry



Storm 'S' 5m hexagonal in Celadon

Morton Commercial Parasols

Unit 1, Horseferry Bridge, Cirencester Road, Witcombe, Gloucester, GL3 4SU, United Kingdom
T: +44 (0)1452 865260 E: info@mortonparasols.com W: www.mortonparasols.com

Warranty

For 12 months after installation, your manufacturers warranty covers the rot-proof properties and colour fastness of the PVC fabric on condition that it has been correctly maintained and only used in a normal environment and under normal conditions.

The manufacturer should either replace free of charge or, at its convenience, reimburse the invoice value of the section of fabric recognized as faulty, excluding any costs or any other compensation for any reason whatsoever.

The warranty does not protect against any damage due to abuse, neglect, vandalism, burns of any kind, fires and natural disasters. Consequently there is no cover for damage caused by:

- Faulty maintenance or the use of unsuitable products or instruments.
- Use of detergent, chemical product or solvent.
- Use of any scraper or other instrument that may harm the fabric surface.
- Normal wear and ageing of the fabric.
- Atmospheric or phytosanitary pollution.
- Soiling by animals.
- Accidents or negligence not attributable to ShadeArt or resulting from force majeure.
- Incorrect assembly or handling by the user.
- Impact damage such as from falling objects, vandalism, road accidents etc
- Burning or scorching from fire and other heat sources such as cigarettes
- Lightning or unusual climatic or environmental conditions.

The warranty excludes the cost of any mechanical device (hardware, mechanisms, structures, etc.) as well as any cost of manufacturing, assembly and installation.

The warranty takes effect from the date of installation of your parasol product.